

A New Development and Distribution Model for Enterprise Software in Education

Chris Coppola, Anthony Potts

Kuali Foundation, Sakai Foundation, rSmart

chris.coppola@rsmart.com, anthony.potts@rsmart.com

Introduction: In the past seven years colleges and universities have devised a new model for developing and distributing mission-critical enterprise software systems. This new model—Community Source—can be described as a convergence of the Cathedral and Bazaar models described in Eric Raymond’s seminal paper, *The Cathedral and the Bazaar*.

The Community Source model is exemplified by the Kuali and Sakai communities. It blends the open, collaborative nature of open source projects with the rigorous planning and management that is typical of proprietary software development. This new model is changing the very nature of the way software is produced and consumed in education.

Best of Breed Application: This demonstration will focus on two topics—first, the structure of the Kuali community, and second on the Kuali Rice middleware. The Kuali community’s governance and organizational patterns exemplify the Community Source model. The Kuali Foundation is a not-for profit organization that provides infrastructure and coordination mechanisms to facilitate effective community collaboration. Within the Kuali Foundation major software projects are organized to build mission-critical systems such as financials, student services, and research administration. Each of these projects has a similar governance structure and community development methodology.

Kuali software is built on a common set of software services and middleware. The project that produces this middleware stack is called Kuali Rice. This demonstration will show the Kuali Rice architecture and the use of enterprise workflow technology.

Demonstration: The best-of-breed demonstration will deal with community governance and organization and the Kuali and Sakai software systems produced using this model.

Contribution: The Community Source model and the open software that is now being produced using this model contribute a unique and effective solution for coordinating IT investments in support of education.

References:

Kuali Community - <http://www.kuali.org/>

Sakai Community - <http://www.sakaiproject.org/>

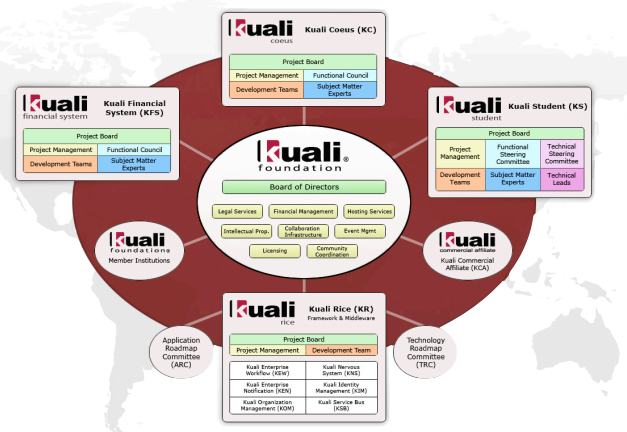


Figure 1. The Kuali Community Organization