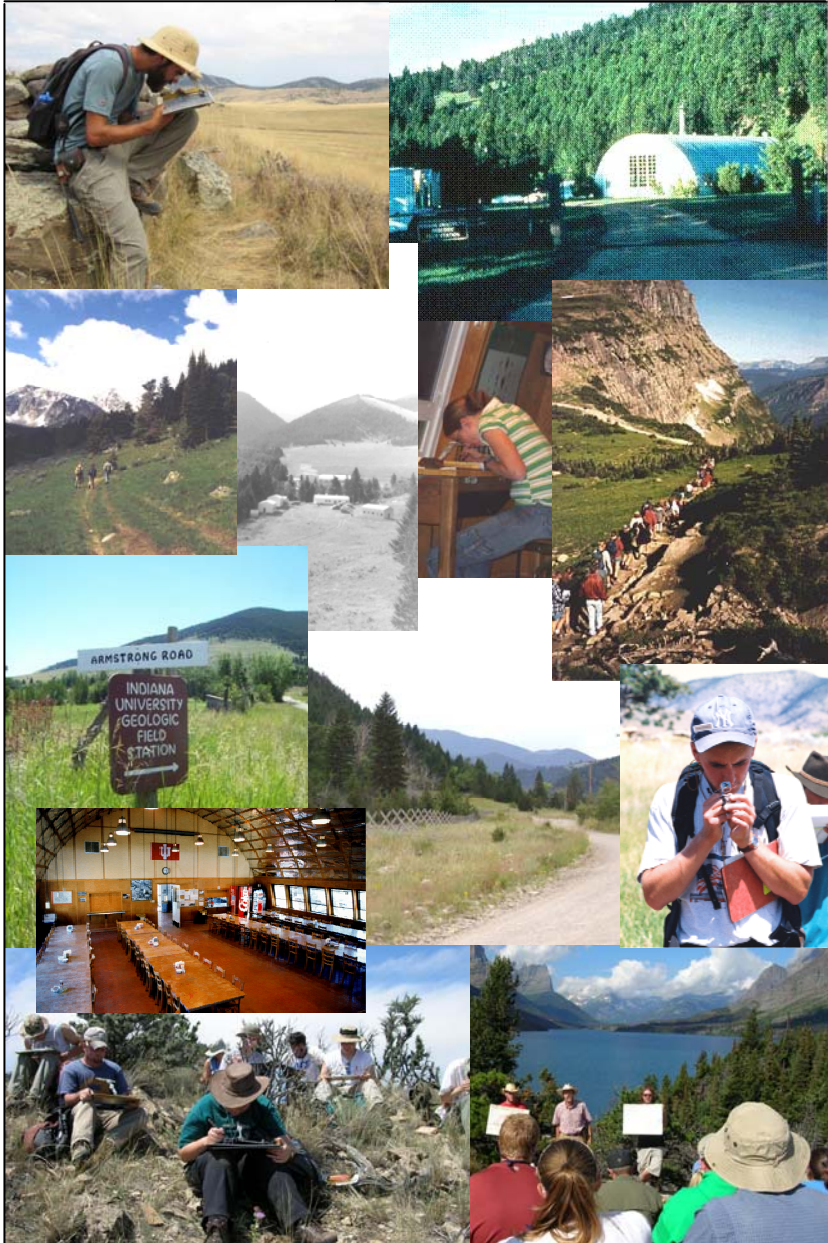




# GEOLOGIC FIELD STATION

INDIANA UNIVERSITY

Department of Geological Sciences  
College of Arts and Sciences  
Bloomington



## \$3 Million in Three Years

### 10-Year Strategic Plan

#### Enhancing our facilities

- ◆ Construct a high-tech classroom/conference center for course lectures and continuing education workshops, seminars, and conference for adults.
- ◆ Develop new laboratories with instrumentation for geophysical, GIS and remote sensing technology, environmental monitoring and water analysis, and a new computer lab to facilitate instruction using data bases and computational models.
- ◆ Replace and renovate housing to accommodate diverse groups of participants in instructional and outreach activities.
- ◆ Improve the recreational areas of the campus to generate additional revenue through increased use of the facility during the off season by church and school groups.



#### Expansion of our Instructional Mission and Outreach

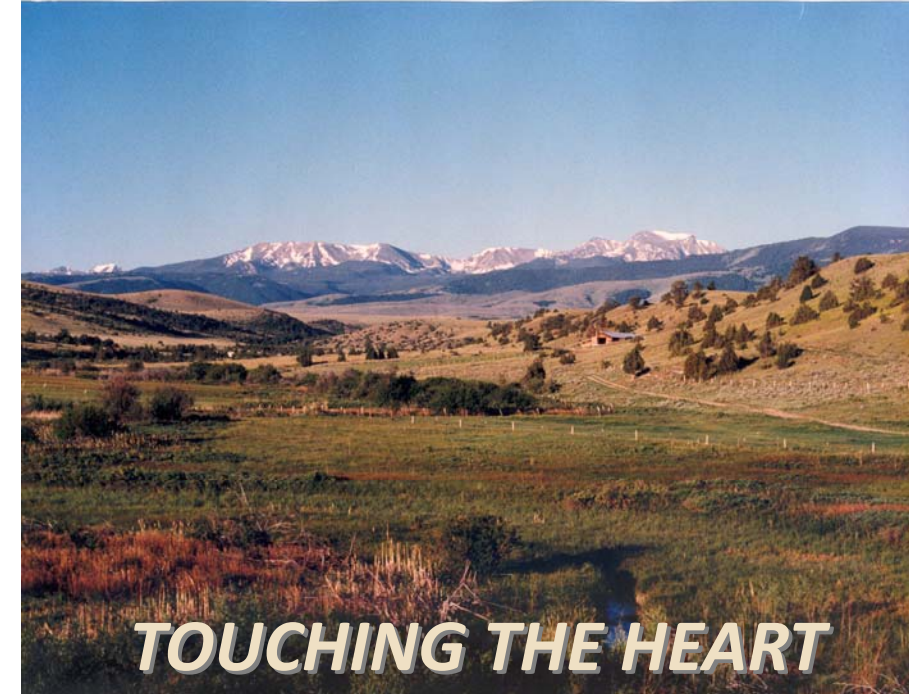
- ◆ Sustain our capstone field-learning experience for geoscience undergraduates, continuing the process of integrating technology components with the course.
- ◆ Develop laboratory-based analyses to complement field studies of water resources and environmental geology in local watersheds.
- ◆ Create new discipline-specific graduate field courses for geoscience majors that draw participants nationally and internationally.
- ◆ Serve as a venue for field-based continuing education courses, workshops, and conferences for industry and professional societies.
- ◆ Provide outstanding pre-college students and their teachers with an early exposure to the intellectual challenge and satisfaction of field geoscience, and thereby encourage them to pursue careers in our discipline.
- ◆ Heighten public awareness of the importance of field-based geoscience through outreach activities, especially travel/learning/adventure programs for non-professional adults.
- ◆ Utilize our expanded curriculum as a foundation for research into the best practices of teaching geoscience in the field.

For more details about our strategic plan and the campaign, visit our website at [www.indiana.edu/~iugfs](http://www.indiana.edu/~iugfs) or contact :

Lee J. Suttner

Phone: 812.855.4957

Email: [suttner@indiana.edu](mailto:suttner@indiana.edu)



## TOUCHING THE HEART

A \$3 million 3-year endowment campaign for the  
*Judson Mead Geologic Field Station*

*Indiana University Bloomington*



## INSPIRING THE MIND

[www.indiana.edu/~iugfs](http://www.indiana.edu/~iugfs)

# TOUCHING THE HEART, INSPIRING THE MIND



Truly great teachers and great courses touch students' hearts and inspire their minds in ways that remain with them the rest of their lives. For many geologists, the summer field course is the academic experience that has touched their heart and inspired them most deeply. It is the cornerstone of the unique cultural foundation of the geosciences community.

Yet nationwide the number of summer field courses has decreased from more than 250 in the 1980's to fewer than 70 today, primarily as a casualty of increasing costs. The demise of these programs seriously jeopardizes our nation's ability to train the future workforce of geoscientists in the critical skills that are essential for careers in the minerals, energy, and environmental industries. It is a concern that demands an insightful plan and commitment from Indiana University, given our outstanding tradition of excellence in field geosciences.

Our response is founded on our unique asset, the Geologic Field Station in the Tobacco Root Mountains of southwest Montana, considered by many to be the finest facility and program of its kind in the world. This invaluable resource empowers us to perceive uncertainties in the future of field programs in geosciences as an exceptional opportunity to develop a bold strategy for broadening the spectrum of our educational activities in Montana.

The Department of Geological Sciences is committed to a long-term strategic plan that will progressively *expand* the scope and breadth of our instructional mission, and will support this expanded program with the *enhancement* in infrastructure necessary to facilitate these new initiatives. We have begun this process, aided by an initial commitment of \$475,000 from the College of Arts and Sciences and Indiana University to meet the immediate needs for building renovation and new accommodations. This is in addition to the over \$150,000 annual program support provided by the College.

But the heart of our strategic plan is a campaign to create a \$3 million endowment through private and corporate support, the income from which can be used in perpetuity for facility *enhancement* and program *expansion*. The expanded curriculum for adults will lead to additional revenue generation. This endowment income and new revenue will ensure that Indiana University remains at the forefront of teaching geoscience in the field, and is able to recruit and provide financial support for students at all levels.

If, like so many others, your mind and heart were touched in a positive and lasting manner by the time you spent in and around our beloved Tobacco Root Mountains, please help ensure that future generations of students can share in this heart-touching and mind-inspiring experience.

Lee J. Suttner  
Robert Shrock Emeritus Professor of Geological Sciences  
and Director of Development

**ESSENTIAL GOALS**

- ◆ Enhancement of infrastructure
- ◆ Expansion of program

Infrastructure enhancement will permit program expansion leading to additional revenue generation.



## How Do We Get There?

The 3-year, \$3million endowment campaign will be in two stages with distinct, but overlapping focuses:

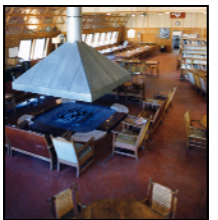
Stage I - \$1.5 million to supplement existing University support to build a new class room/conference center, upgrade adult housing, student dormitories and recreational facilities, and to purchase laboratory/field instrumentation. Target ending date - June 2010

Stage II - \$1.5 million for scholarships and financial aid for students, course development, and research on best teaching practices in the field. Target ending date - January 2012

A \$3million endowment would exist in perpetuity and would provide in excess of \$150,000 of spendable income annually. This would be supplemented with additional revenue generated by new courses for adults.

## How Can You Help?

- ◆ Offer your strategic advice on both the campaign and our vision, 10-year plan and goals.
  - ◆ Volunteer to assist us in locating and contacting non-IU alums of the Field Station
- and



**...take advantage of the options for giving that will help us meet our campaign goal. These include outright gifts, pledges over five years, bequests, trusts and appreciated assets. Individual or corporate gifts greater than \$100,000 will qualify for naming opportunities. For more information contact us.**



## HOOSIER HOLLOWTOP HUNDRED GIVING CIRCLE

Probably all Field Station alumni retain fond images of the Tobacco Root Range and its signature peak - - Hollowtop Mountain. Help us meet our challenging campaign goal. Become an inaugural member of the Hoosier Hollowtop Giving Circle through an outright gift or 5-year pledge at a giving level or your choice. Inaugural members will receive a specially engraved pocket transit and permanent recognition at the Field Station as an expression of appreciation for their generosity.

- Pathfinder Level: \$10,000 to <\$50,000
- Trailblazer Level: \$50,000 to <\$100,000
- Visionary Level: >\$100,000

V  
I  
S  
I  
O  
N

***“Indiana University’s Geologic Field Station will lead the nation in teaching geosciences in the field, in research focused on field-based learning in geoscience, and in supporting discovery and discourse on development of best practices in field geosciences through workshops and conferences. Its range of programs, sustained by endowed funds, will encompass undergraduate and graduate classes, and extend through outreach to students of all ages, to adults, and to individuals employed in geoscience-related areas.”***

Judson Mead Geologic Field Station, 2008