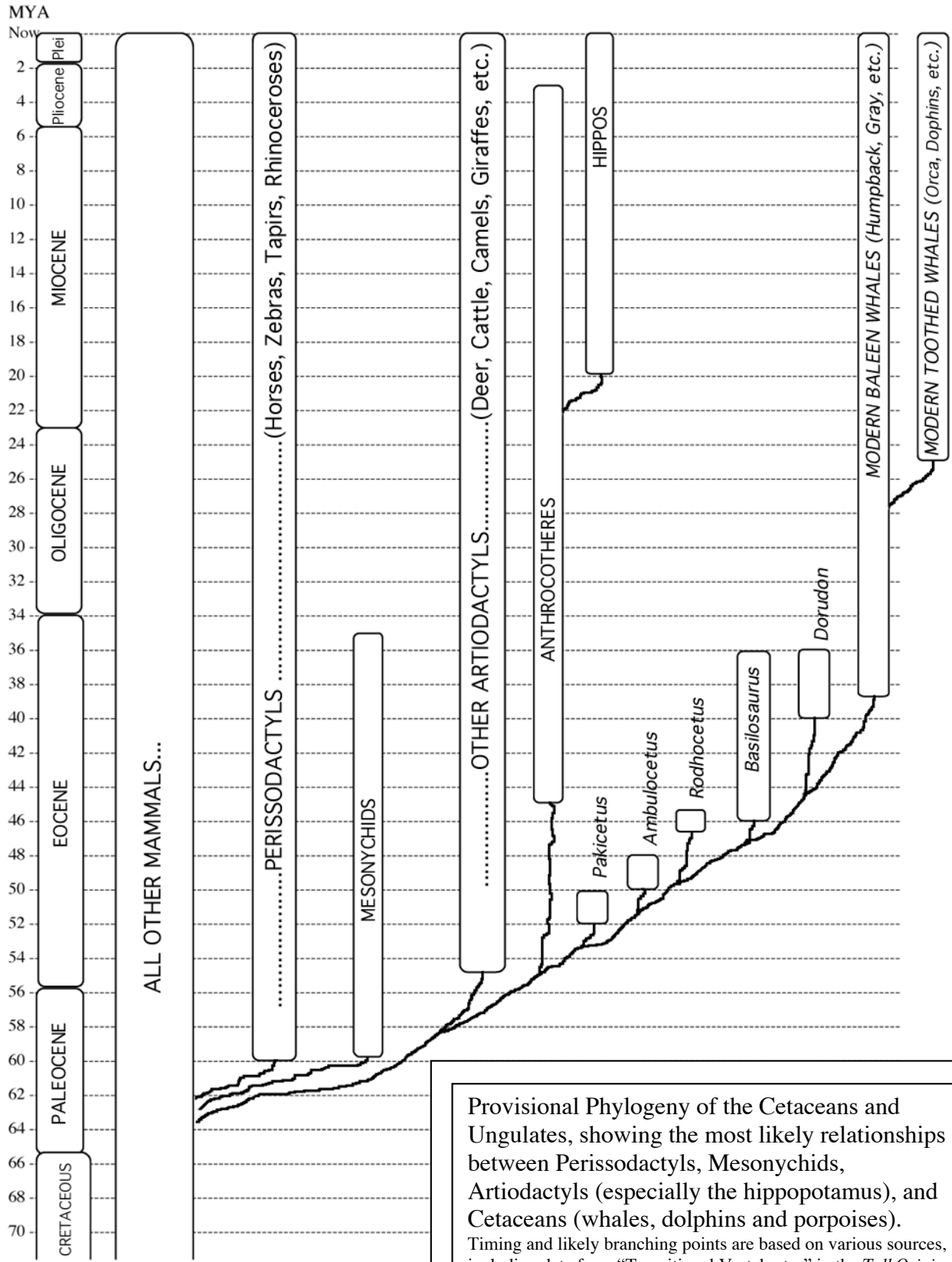


PROVISIONAL PHYLOGENY OF CETACEANS AND UNGULATES



Provisional Phylogeny of the Cetaceans and Ungulates, showing the most likely relationships between Perissodactyls, Mesonychids, Artiodactyls (especially the hippopotamus), and Cetaceans (whales, dolphins and porpoises).

Timing and likely branching points are based on various sources, including data from "Transitional Vertebrates" in the *TalkOrigins Archive*, at <http://www.talkorigins.org/faqs/faq-transitional.html> L. Flammer, April 2008.