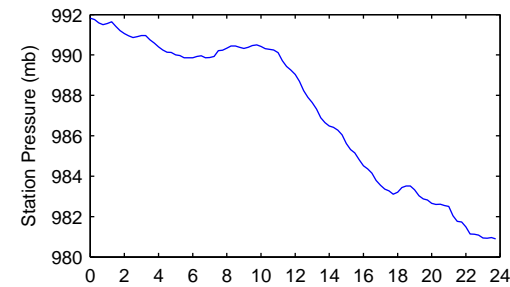
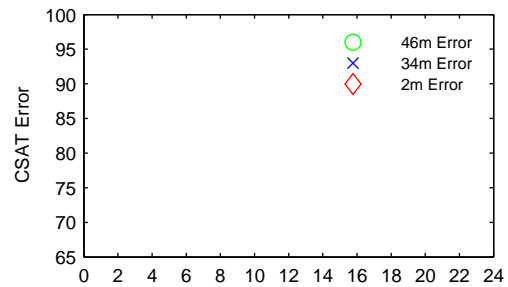
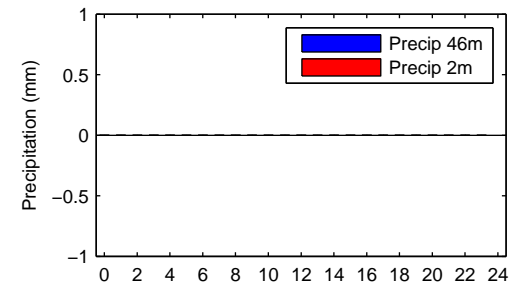
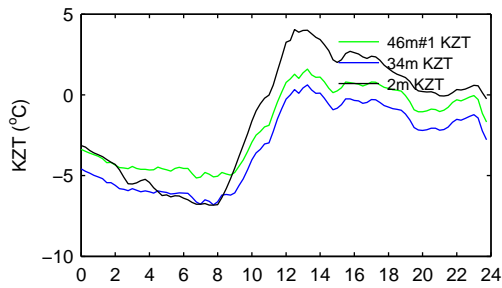
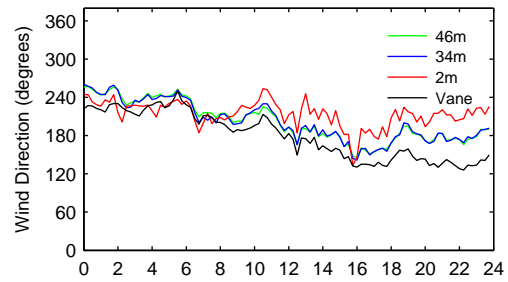
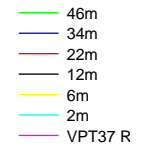
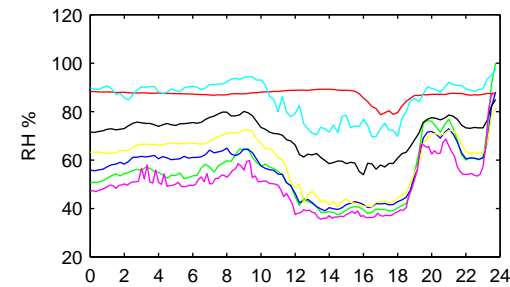
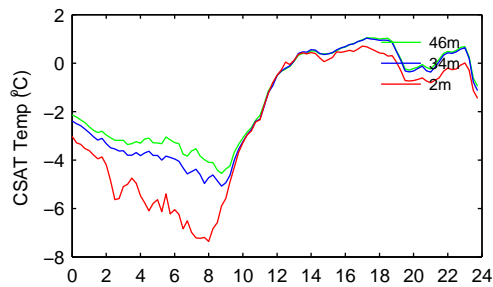
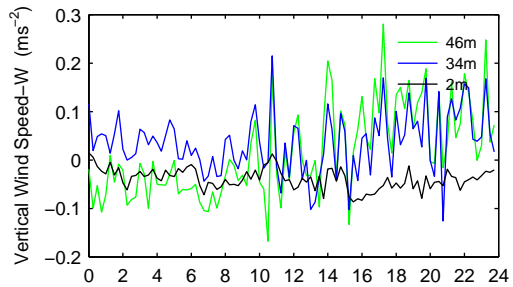
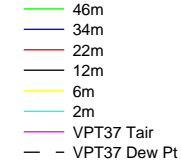
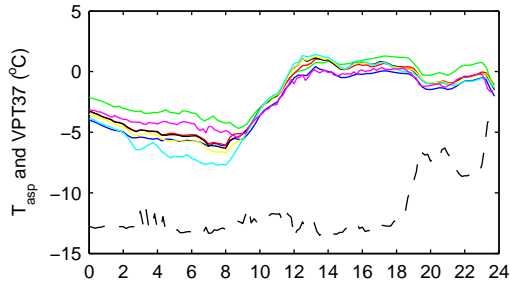
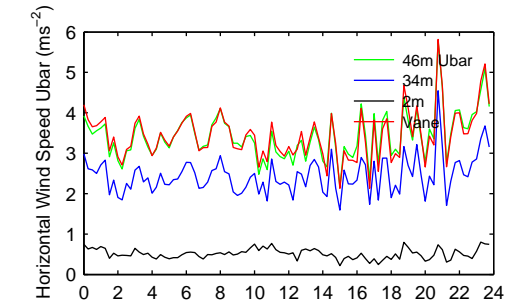
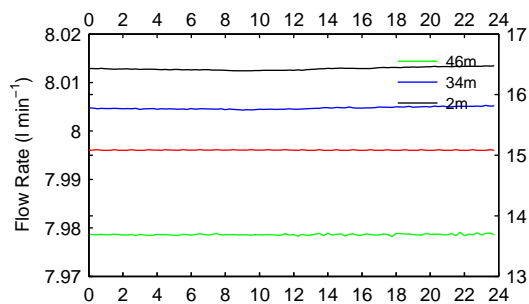


# Daily Plots DOY=044 (13-Feb-2012)

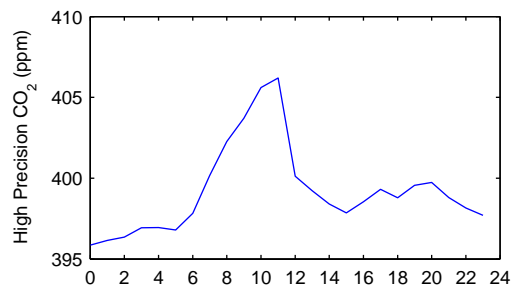
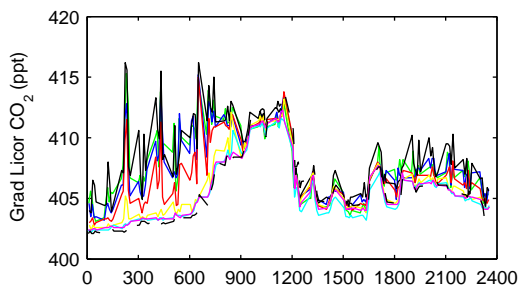
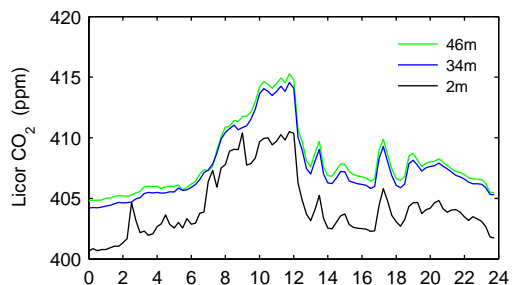
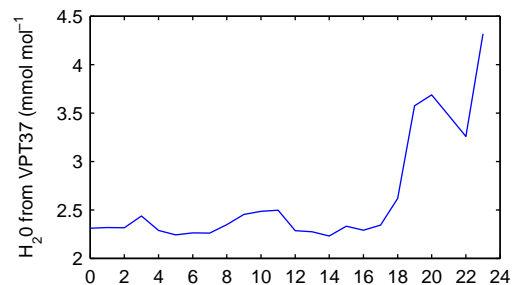
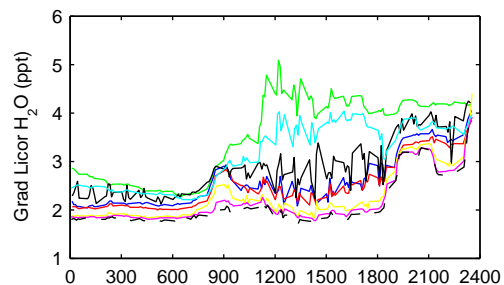
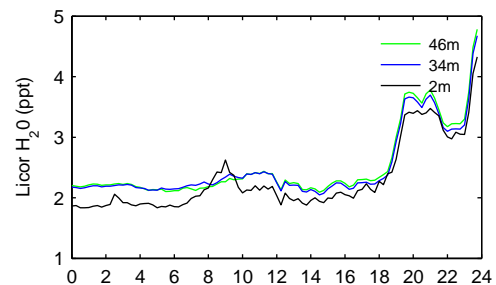
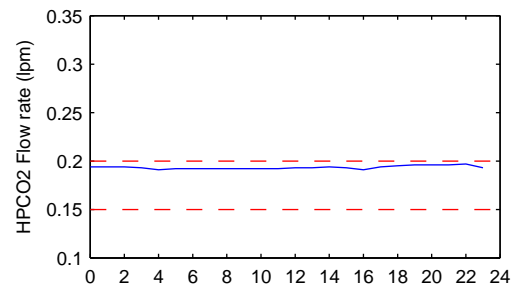
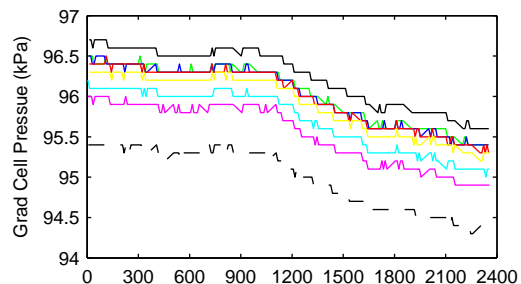
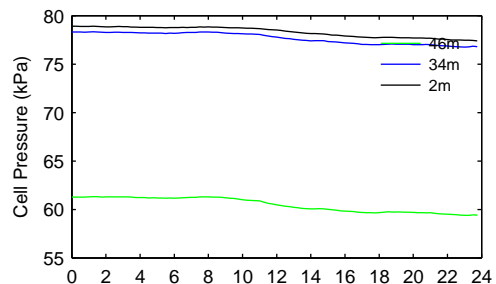
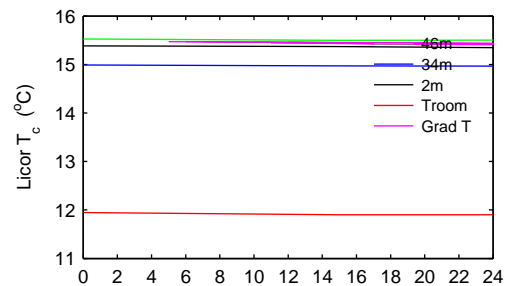


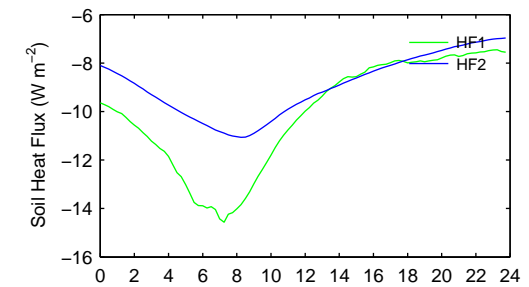
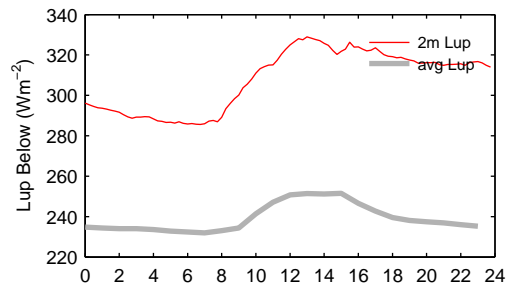
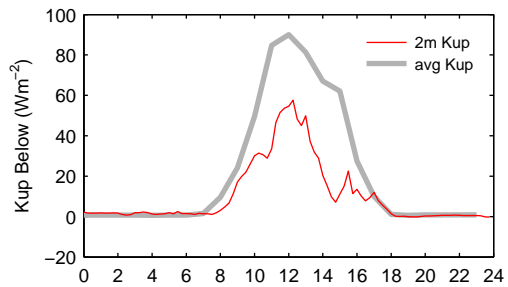
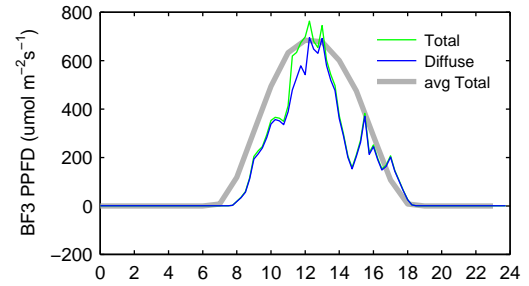
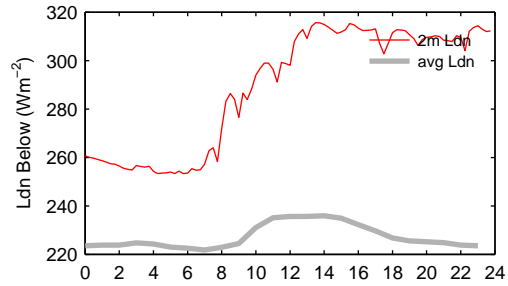
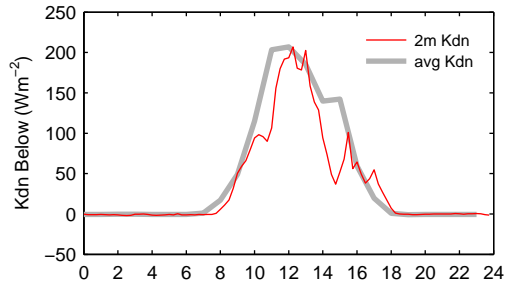
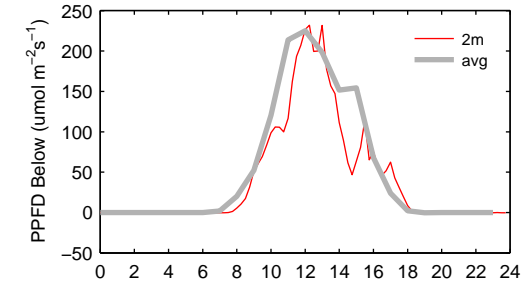
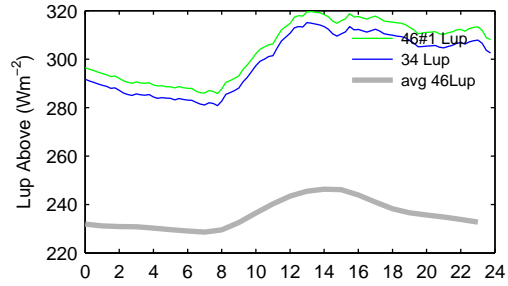
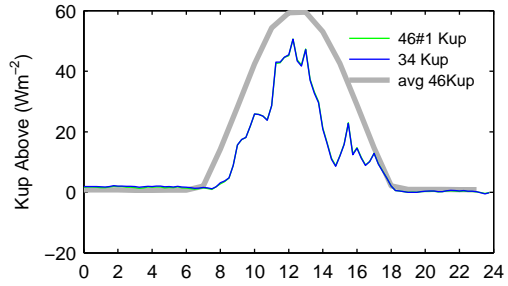
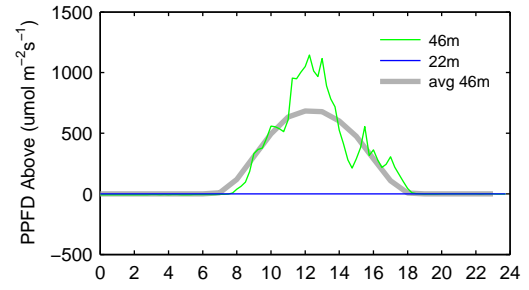
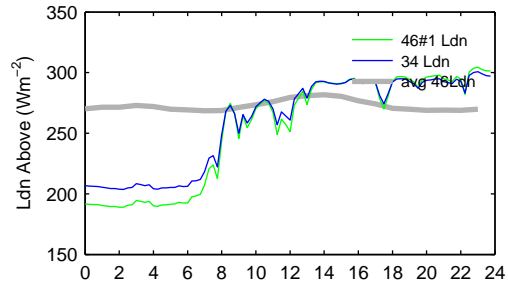
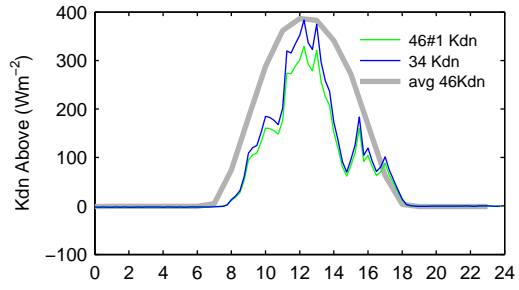


Grad Flow Rate ( $l\ min^{-1}$ )

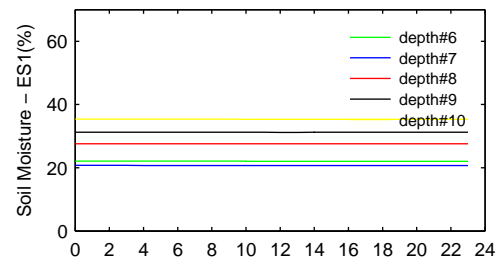
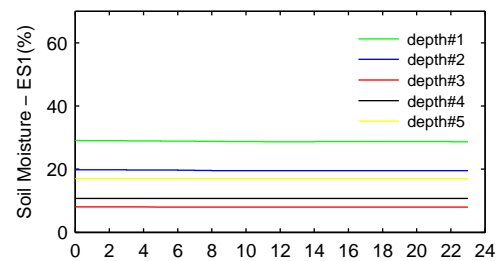
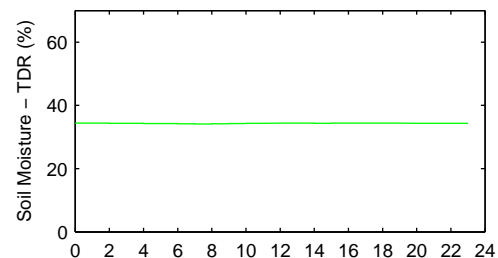
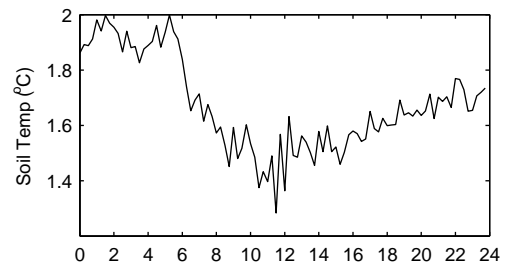
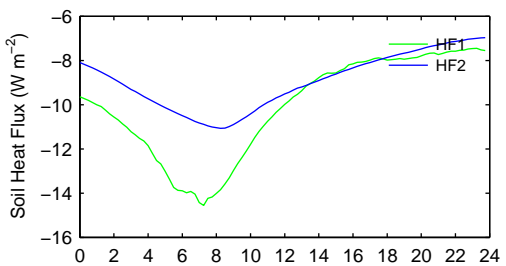
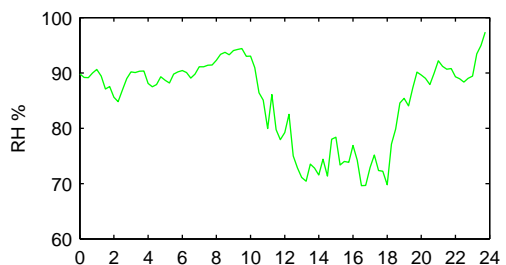
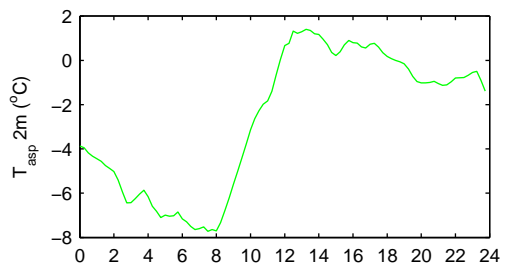
### Legend for gradient plots

- 0.25m
- 0.5m
- 1m
- 2m
- 4m
- 8m
- 16m
- - 32m

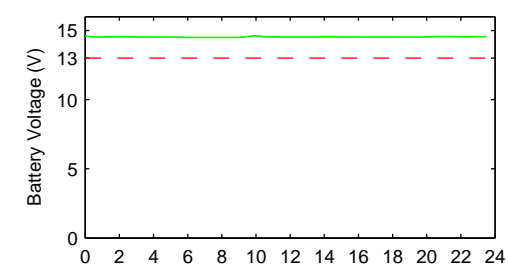
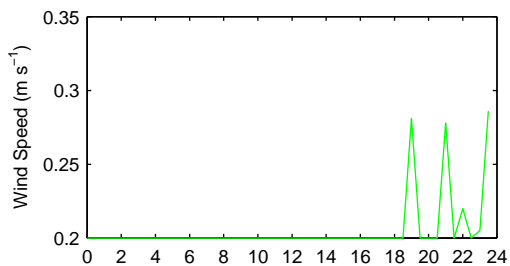
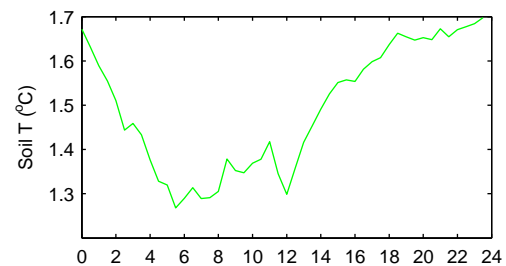
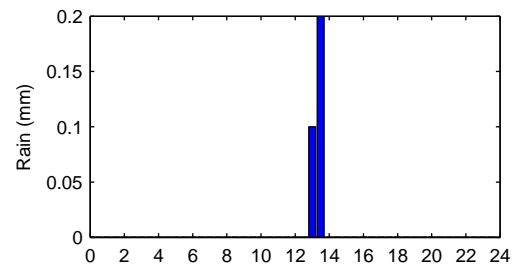
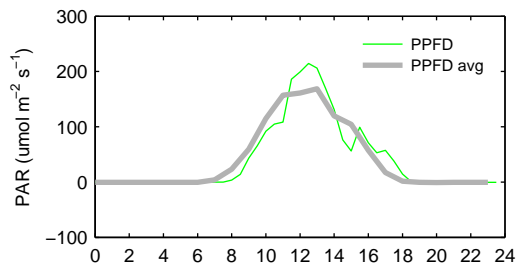
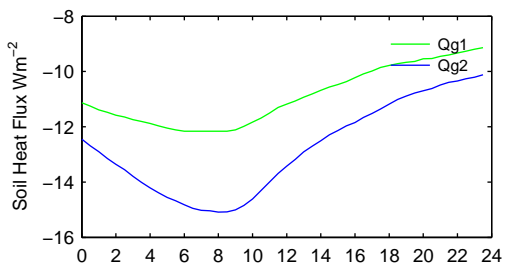
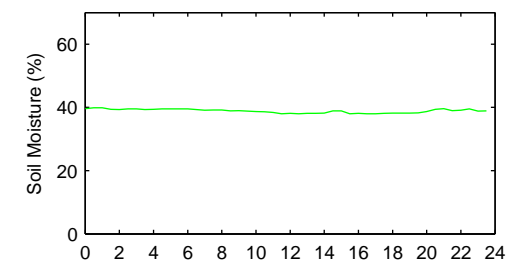
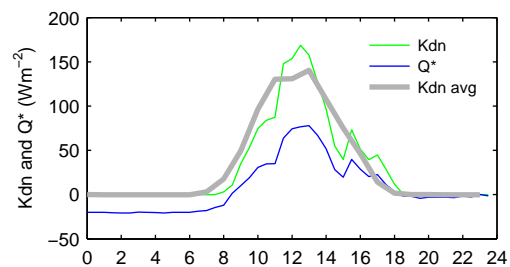
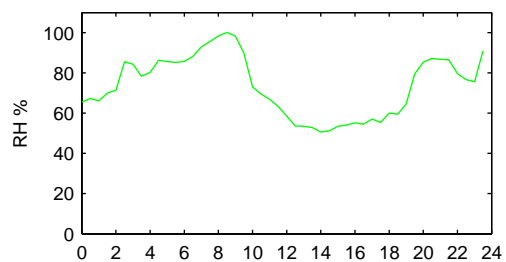
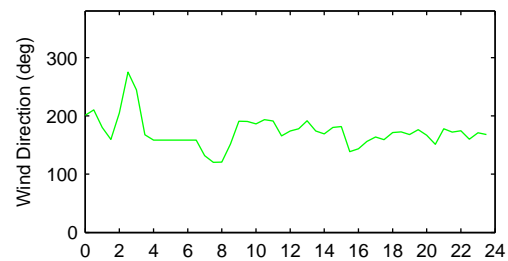
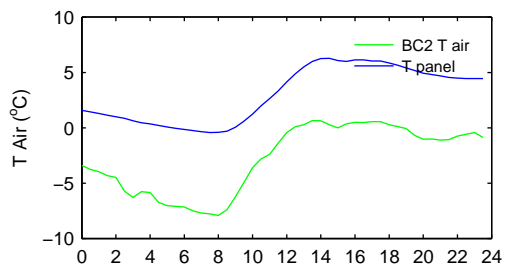




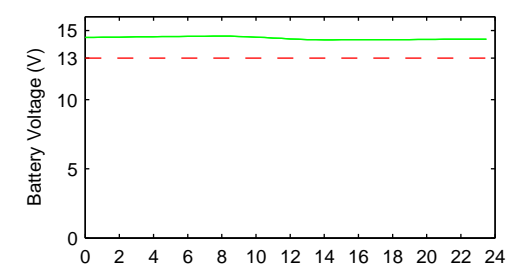
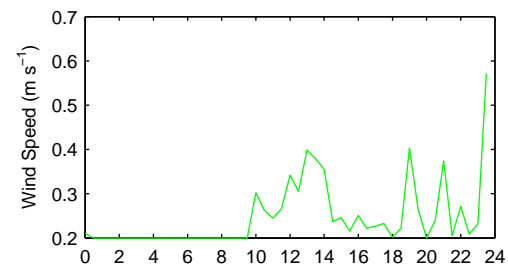
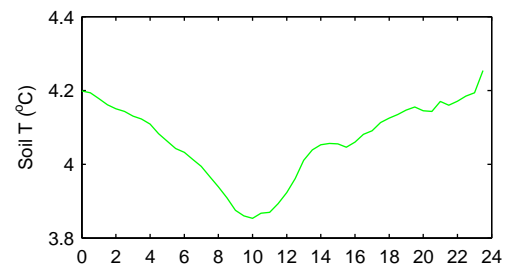
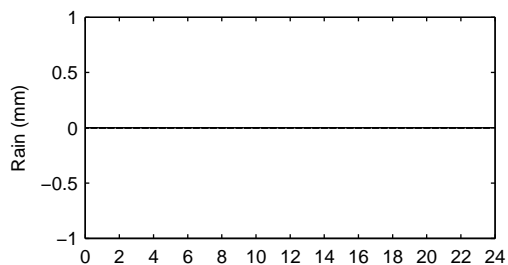
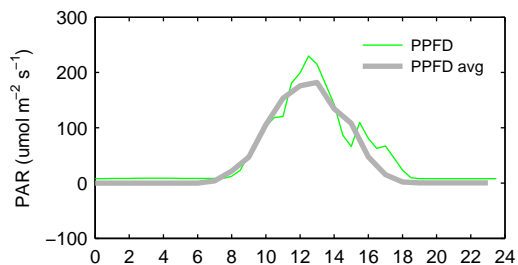
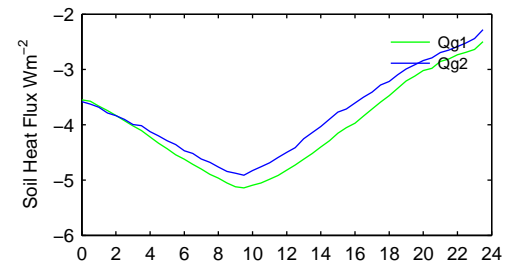
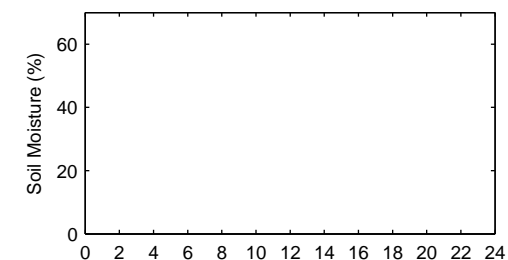
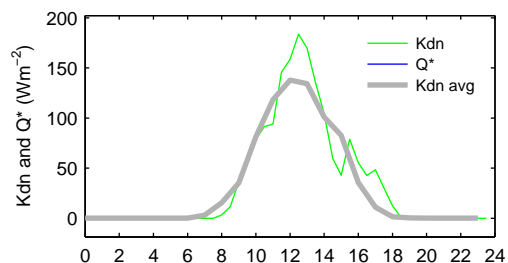
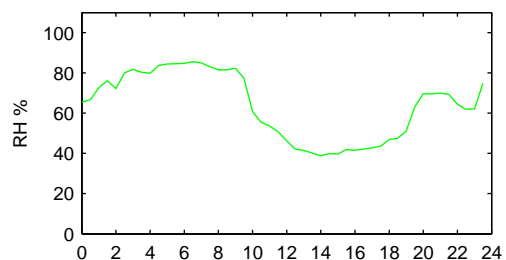
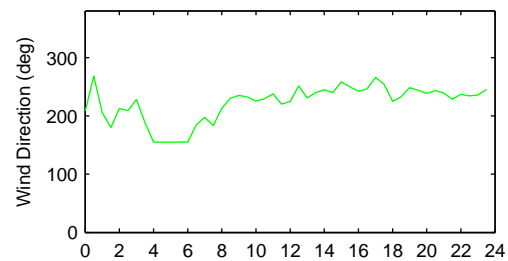
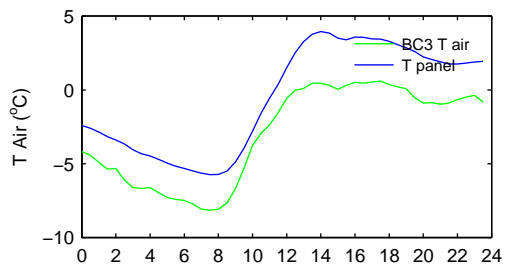
# BC1 PLOTS



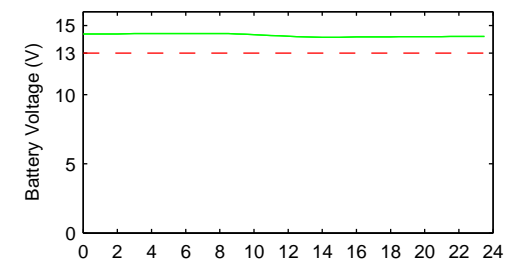
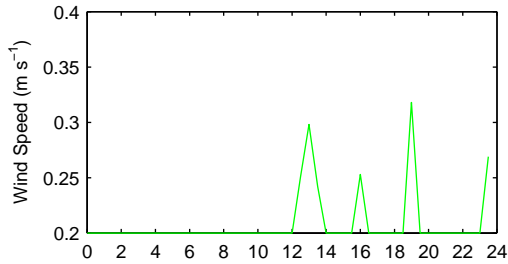
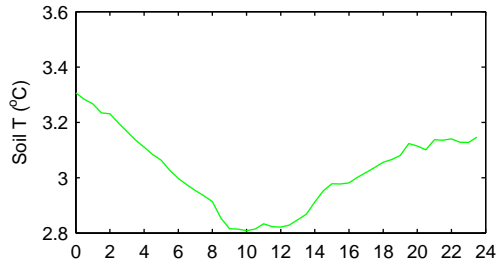
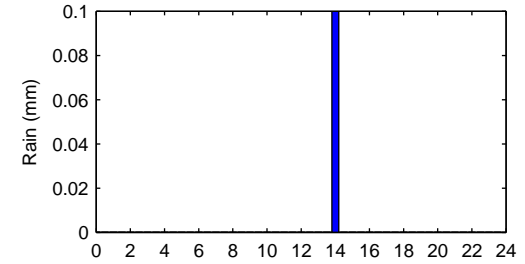
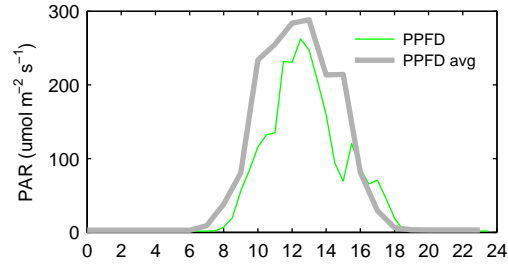
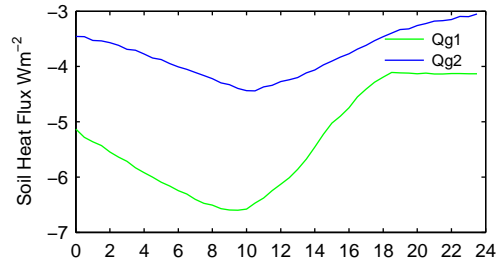
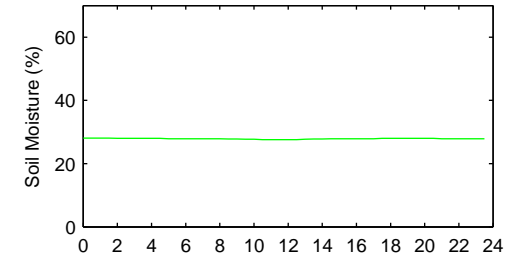
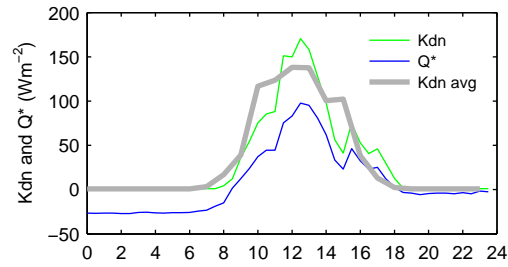
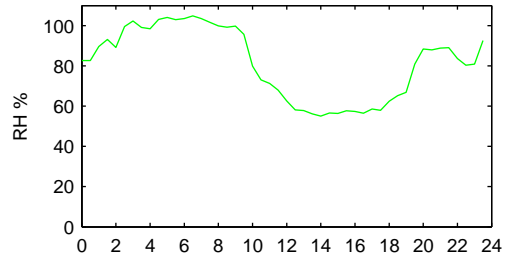
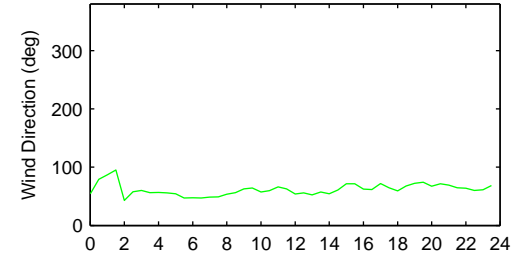
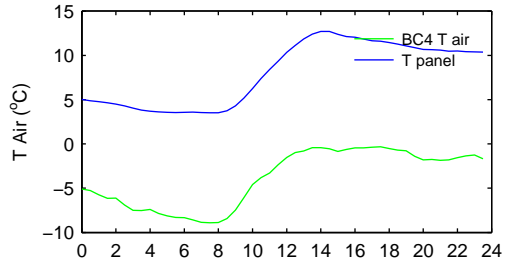
# BC2 PLOTS



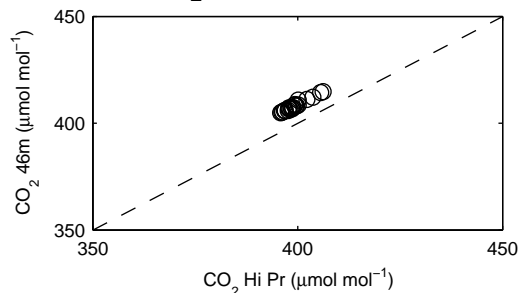
# BC3 PLOTS



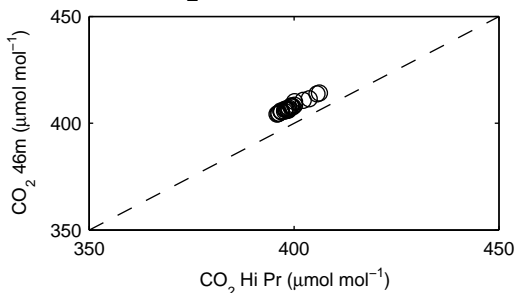
# BC4 PLOTS



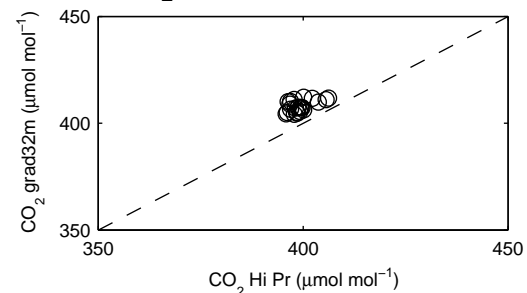
**[CO<sub>2</sub>] 46m vs. High Prec.**



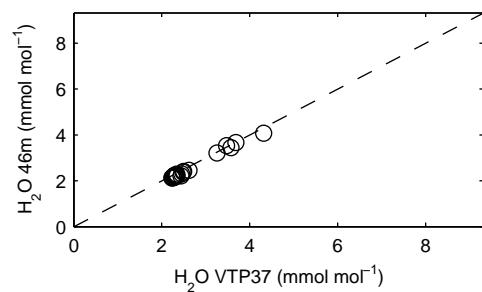
**[CO<sub>2</sub>] 34m vs. High Prec.**



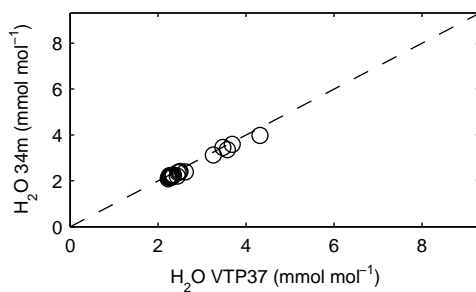
**[CO<sub>2</sub>] Grad 32m vs. High Prec.**



**[H<sub>2</sub>O] 46m vs. VTP37**



**[H<sub>2</sub>O] 34m vs. VTP37**



**[H<sub>2</sub>O] grad32m vs. VTP37.**

