

Practice Pedigrees:

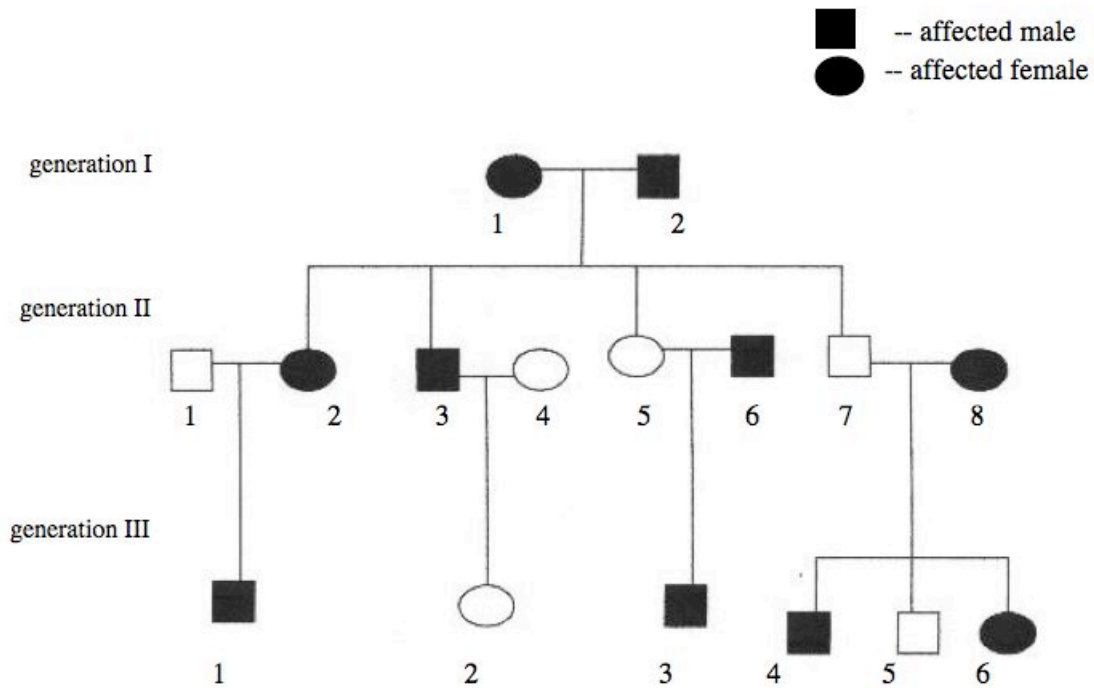
Examine the following pedigree.

(1) What inheritance pattern do you think is shown? (Autosomal Recessive, Autosomal Dominant, X-linked Recessive)

Can you rule out the other two patterns? Are you 100% certain, or are you doing it by probability. Explain.

It is VERY BENEFICAL to go through the entire pedigree and determine the genotype of each individual. If you can't determine one of the alleles, just use a ?.

AA, Aa, aa or A? or if X-linked: $X^A X^A$, $X^A X^a$, $X^a X^a$, $X^A Y$, or $X^a Y$ or $X^A X^?$



(2) What inheritance pattern do you think is shown? ? (Autosomal Recessive, Autosomal Dominant, X-linked Recessive)

Can you rule out the other two patterns? Are you 100% certain, or are you doing it by probability. Explain.

It is VERY BENEFICAL to go through the entire pedigree and determine the genotype of each individual. If you can't determine one of the alleles, just use a ?.

AA, Aa, aa or A? or if X-linked: $X^A X^A$, $X^A X^a$, $X^a X^a$, $X^A Y$, or $X^a Y$ or $X^A X^?$

